

LOOK

4G Product Portfolio

The background features a dark blue field with several glowing, wavy lines in shades of blue and orange. A white wireframe grid is overlaid on the left side, extending towards the center. The overall aesthetic is futuristic and digital.

BBU

Indoor BBU



**EMB5116
(4G)**

- Dimension : 19"/2U,88 (H) *483 (W) *310 (D) , <10kg
- 4G mode: TDD/FDD/NB-IoT
- Capacity: TDD/FDD/NB-IoT: 36/36/36 carriers



**EMB6216
(4G+5G)**

- Dimension : 19"/2U,88 (H) *440 (W) *360 (D) , 21kg
- 4G/5G mode: TDD/FDD/NB-IoT/NR
- Capacity:
TDD/FDD/NB-IoT: 30/30/30/carriers
NR: 36 carriers

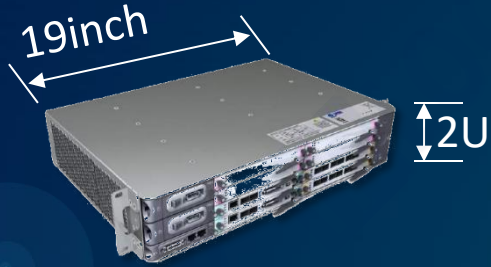
Outdoor BBU



**EBB5326
(4G)**

- Dimension : 440*280*100mm, 12L/12kg
- 4G mode: TDD/FDD
- Capacity: TDD/FDD: 6 carriers

● BBU — EMB5116 (4G)



Highlights

- Easy to deploy: 19 "wide, 2U high, weight <10Kg, support max 20Km remote deployment.
- 400 users in active state and 1200 connected users are supported by single cell with 20M bandwidth.
- Three cells are the standard configuration, which support 60M bandwidth processing ability at maximum, supporting 1200 users in active state and 3600 connected users.
- 5M bandwidth is the minimum configuration unit, and with baseband board, capacity expansion can be established.
- Support O1, O2, S1/1/1, S2/2/2 cell configuration.

Product Model		EMB5116
Dimension		88*483*310mm
Weight		<10Kg
Power Consumption		Typical: 120W(S111); Max: 200W(S111) Full-configuration:<500W
Power Supply		-48V DC (-57V ~ -40V) 220V AC (140V ~ 300V)
Capacity	TD-LTE	36*20MHz
	LTE FDD	36*20MHz
S1/X2 Interfaces		S1/X2:4*10GE(Optical/Electric)
Protection Level		IP20
Temperature		-5 °C ~ +55 °C
Moisture		15% ~ 85%

● BBU — EMB6216 (4/5G)



Highlights

- High capability: modular stack design, supports NR(NSA/SA) & TD-LTE & LTE FDD & NB-IoT mode
- Directly choose option 2 SA ultimate form. Or 4G core to 5G core, 4/5G integration, coexistence of multiple architectures
- Large capacity: supports NR 36*100M / LTE 30*20M
- Highly integrated: 2U, Support 4/5G dual-mode
- Power supply unit HPSD
- Fan unit HFCD
- Function board HSCTDa/HBPOF/SCTF/BPOI/BPOKa
- SA Combination type: EMB6216 (HSCTDa+HBPOF)
- Synchronization modes: GPS, ancestor clock, remote GPS over optical fiber, 1588V2

Product Model		EMB6216
Dimension		88x440x360 mm
Weight		18Kg
Capacity	NR	36*100MHz
	LTE	30*20MHz
Mode		NR (NSA/SA) & TD-LTE & LTE FDD & NB-IoT
Synchronization method		GPS/1588v2
Power Supply		-48V DC (-57V ~ -40V)
Protection Level		IP20
S1/N2 Interface		S1:2*10Gbps optical/1GE electrical interface N2:2*25Gbps N2 optical interface
Temperature		-5 °C ~ +55 °C
Moisture		15% ~ 85%

● Outdoor BBU — EBB5326



Highlights

Small footprint, light weight, flexibility, low power consumption

- Diversity: Support LTE FDD/LTE TDD
- Each unit supports 600 connected users
- Support 10/15/20M bandwidth configuration
- The maximum distance between BBU and RRU is 20KM
- BBI-RRU interface: support 6*10GE SFP module

Product Model		EBB5326
Dimension		440*280*100mm
Weight		12Kg
Power Consumption		Typical: 130W(S111), Max: 190W(S111)
Installation method		wall-mounted chassis installation, holding pole installation
Power Supply		-48V DC(-57~-40V)
Capacity	TD-LTE	LTE TDD 6*20MHz
	LTE FDD	LTE FDD 6*20MHz
S1/X2 Interfaces		SI/X2:2*10GE(Optional)
Protection Class		IP65
Ir Interface		6*10GE
Temperature		-40 °C ~ +55 °C
Moisture		5% ~ 100%

Macro Cell Products

FDD

1.8G



4T4R
FDRU344(1800MHz)

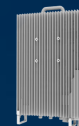
- UL1710-1735MHz, DL1805-1830MHz
- 25MHz
- 4*40W
- 20kg/20L



4T4R
FDRU344(1800MHz-U)

- UL1730-1785MHz, DL1825-1880MHz
- 40MHz
- 4*40W
- 20kg/20L

2.1G



4T4R
FDRU514(2100MHz)

- UL1920-1975MHz, DL 2110-2165MHz
- 40MHz
- 4*80W
- 21kg/21L

850M,900M



2T4R
FDRU3424(850MHz)

- UL 814MHz-849MHz
- DL 859MHz-894MHz
- 35MHz
- 2*80W 20kg/20L



2T4R
FDRU3424 (900MHz)

- UL 885MHz-915MHz,
- DL 930MHz-960MHz
- 30MHz
- 2*80W 20kg/19L

700M



4T4R
FDRU524(700MHz)

- UL 703MHz-748MHz, DL 758MHz-803MHz
- 20MHz
- 4*80W
- 18kg/17L

TDD

2.6G



2T2R
TDRU342 (2600MHz)

- 2575-2635MHz
- 60M
- 2*60W
- 15kg15L

1.9G&2.0G



8T8R
TDRU348 (1900MHz)

- 1885~1915/2010~2025MHz
- 30/15M
- 8*20W
- 25kg25L



2T2R
TDRU342 (1900MHz)

- 1885~1915/2010~2025
- 30/15M
- 2*40W
- 15kg15L

2.3G



2T2R
TDRU342 (2300MHz)

- 2320~2370MHz
- 50M
- 2*50W
- 12kg15L



8T8R
TDRU518 (2300MHz)

- 2.3GHz 8TR

Outdoor Micro Cell Products

TDD



mTDRU352D

- TDD: 2575~2635MHz
- 40M
- 2*10W
- 3.5kg3.5L



mTDRU352D-P

- TDD: 2575-2575MHz
- 100M
- 2*10W
- 3.5kg3.5L

TDD



TDRU364FAD-P

- TDD: 1885~1915/2010~2025MHz, 30/15M, 4 *10W
- 2575~2635MHz, 60M, 4*15W
- 18kg17L

Indoor Small Cell Products

TDD
FDD
**UMTS/
GSM**



pRU352

- TDD: 2320~2370MHz, 40M , 2*250mW
- FDD: UL 1710-1765/DL 1805-1860, 20M , 2*125mw
- GSM: UL1710-1765/DL 1805-1860, 6*200KHz , 1*125mw
- 1.2kg/1.2L



pRU352 B08

- TDD: 2320~2370MHz, 40M ,2*250mW
- FDD: UL885-915MHz,DL930-960MHz, 20M , 2*125mw
- GSM: UL885-915MHz,DL930-960MHz, 6*200KHz , 1*125mw
- 1.5kg/1.5L

● 700MHz 4T4R RRU — FDRU524 (700MHz)



Application Scenarios



Dense Urban/Urban



Suburban/Rural

Highlights

- Diversified services: support LTE FDD、NB-IoT
- Power consumption intelligent control: support EEIM intelligent management, reduce energy consumption of more than 1/3
- New generation power amplifier control technology: support high efficiency power amplifier EA solution: Wave elimination + intermediate frequency CFR, DPD, Doherty Technology
- Product supports salt spray prevention
- Support 2*25/10G.

Product Model	FDRU524 (700MHz)
Dimension	17L
Weight	18Kg
Power Consumption(typical)	580W
Antenna Channel	4
Transmission Power	4*80W
Power Supply	-48V DC (-57~-40V)
Frequency	UL: 703MHz-748MHz DL: 758MHz-803MHz
OBW	45MHz
IBW	45MHz
Dual Mode Capacity	NR:30M/40MHz; FDD LTE: 20MHz
Protection Degree	IP65
Temperature	-40 °C ~+55 °C
Moisture	5% ~100%

● 850MHz 2T4R RRU — FDRU3424(850MHz)



Application Scenarios



Suburban/Rural

Highlights

- ❑ FDD RRU ,Strong penetration and good performance
- ❑ Efficient PA solutions: CFR, DPD, Doherty, etc. to achieve PA efficiency> 30%
- ❑ EEIM: Intelligent energy management algorithm for energy saving, environmentally friendly radio solutions
- ❑ The maximum distance between BBU and RRU is 20KM
- ❑ BBU-RRU interface: support 2 * 10GE SFP module

Product Model	FDRU3424(850MHz)
Dimension (W * H * D)	356mm*430mm*123mm , 19L
Weight	20Kg
Power Consumption	Typical 300W
Antenna Channel	2T4R
Transmission Power	2*80W
Power Supply	-48V DC (-57~-40V)
Frequency	UL : 814MHz-849MHz DL : 859MHz-894MHz
OBW	35MHz
IBW	35MHz
Dual Mode Capacity	FDD LTE: 35MHz(20M+15M) NB-IoT: 200KHz*2
Protection Degree	IP65
Temperature	-40 °C ~+55 °C
Moisture	5% ~100%

● 900MHz 2T4R RRU — FDRU3424(900MHz)



Application Scenarios



Dense Urban/Urban



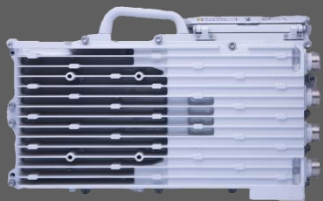
Suburban/Rural

Highlights

- Strong penetration and good performance
- Diversified services: support LTE FDD
- High Efficiency PA Solution: CFR, DPD, Doherty etc. achieving PA Efficiency>30%
- EEIM: Intelligent Energy Management Algorithm saving energy, achieving green radio solution
- Max distance between BBU and RRU is 20KM
- BBU-RRU interface supporting 2*10GE SFP modules

Product Model	FDRU3424(900MHz)
Dimension (W * H * D)	356mm*430mm*123mm , 19L
Weight	20Kg
Power Consumption	Typical 300W
Antenna Channel	2T4R
Transmission Power	2*80W
Power Supply	-48V DC (-57~-40V)
Frequency	UL : 885MHz-915MHz DL : 930MHz-960MHz
OBW	30MHz
IBW	30MHz
Dual Mode Capacity	FDD LTE: 20MHz*2 NB-IoT: 200KHz*2
Protection Degree	IP65
Temperature	-40 °C ~ +55 °C
Moisture	5% ~ 100%

● 1800MHz 4T4R RRU — FDRU344(1800MHz)



Application Scenarios



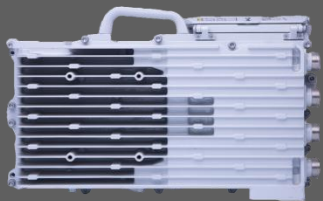
Dense Urban/Urban

Highlights

- ❑ Zero footprint, lighter and more flexible
- ❑ Diversified services: support LTE FDD
- ❑ High Efficiency PA Solution: CFR, DPD, Doherty etc. achieving PA Efficiency>30%
- ❑ EEIM: Intelligent Energy Management Algorithm saving energy, achieving green radio solution
- ❑ Max distance between BBU and RRU is 20KM
- ❑ BBU-RRU interface supporting 2*10GE SFP modules

Product Model	FDRU344(1800MHz)
Dimension (W * H * D)	356mm*430mm*136mm
Weight	20Kg
Power Consumption	Typical 390W
Antenna Channel	4
Transmission Power	4*40W
Power Supply	-48V DC (-57~-40V)
Frequency	UL: 1710MHz-1735MHz DL: 1805MHz-1830MHz
OBW	25MHz
IBW	25MHz
Protection Class	IP65
Temperature	-40 °C ~ +55 °C
Moisture	5% ~ 100%

● 1800MHz 4T4R RRU — FDRU344(1800MHz-U)



Application Scenarios



Dense Urban/Urban

Highlights

- ❑ Zero footprint, lighter and more flexible
- ❑ Diversified services: support LTE FDD
- ❑ High Efficiency PA Solution: CFR, DPD, Doherty etc. achieving PA Efficiency>30%
- ❑ EEIM: Intelligent Energy Management Algorithm saving energy, achieving green radio solution
- ❑ Max distance between BBU and RRU is 20KM
- ❑ BBU-RRU interface supporting 2*10GE SFP modules

Product Model	FDRU344(1800MHz-U)
Dimension (W * H * D)	356mm*430mm*136mm
Weight	20Kg
Power Consumption	Typical 390W
Antenna Channel	4
Transmission Power	4*40W
Power Supply	-48V DC (-57~-40V)
Frequency	UL : 1730MHz-1785MHz DL : 1825MHz-1880MHz
OBW	40MHz
IBW	55MHz
Protection Class	IP65
Temperature	-40 °C ~ +55 °C
Moisture	5% ~ 100%

● 1.9&2.0G Macro cell — TDRU348(1900MHz+2000MHz)



Application Scenarios



Dense Urban/Urban



Suburban/Rural

Highlights

- ❑ Zero footprint, lighter and more flexible
- ❑ High Efficiency PA Solution: CFR, DPD, Doherty etc. achieving PA Efficiency>30%
- ❑ EEIM: Intelligent Energy Management Algorithm, achieving green radio solution
- ❑ Max distance between BBU and RRU is 20Km
- ❑ BBU-RRU interface supporting 2*10GE SFP modules

Product Model	TDRU348(1900MHz)
Dimension (W x H x D)	356mm*479mm*149mm, 25L
Weight	25Kg
Power Consumption	Typical 275W
Antenna Channel	8T8T
Transmission Power	20W/Channel
Power Supply	-48V DC (-57~-40V)
Frequency	1885MHz~1915MHz(F), 2010MHz~2025MHz(A)
OBW	F: 30M + A: 15M
IBW	F: 30M + A: 15M
Protection Degree	IP65
Temperature	-40 °C ~ +55 °C
Moisture	5% ~ 100%

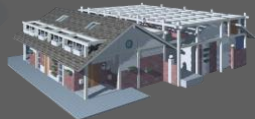
● 1.9&2.0G Macro cell — TDRU342(1900MHz+2000MHz)



Application Scenarios



Dense Urban/Urban



Hotspot/Blindspot

Highlights

- ❑ Zero footprint, lighter and more flexible
- ❑ High Efficiency PA Solution: CFR, DPD, Doherty etc. achieving PA Efficiency>35%
- ❑ EEIM: Intelligent Energy Management Algorithm, achieving green radio solution
- ❑ Max distance between BBU and RRU is 20Km
- ❑ Max 12 cell merge, max 4 level cascading
- ❑ BBU-RRU interface supporting 2*10GE SFP modules

Product Model	TDRU342(1900MHz)
Dimension (W * H * D)	310mm*400mm*121mm, 15L
Weight	15Kg
Power Consumption	Typical 150W
Antenna Channel	2T2R
Transmission Power	2*40W
Power Supply	-48V DC (-57~-40V), 220V AC (140~300V)
Frequency	1885MHz~1915MHz(F), 2010MHz~2025MHz(A)
OBW	F: 30M + A: 15M
IBW	F: 30M + A: 15M
Protection Degree	IP65
Temperature	-40 °C ~+55 °C
Moisture	5% ~100%

● 1.8G Macro cell — TLU300T



Application Scenarios



Dense Urban/Urban



Suburban/Rural

Highlights

- Zero footprint, lighter and more flexible
- High Efficiency PA Solution: CFR, DPD, Doherty etc. PA Efficiency>30%
- EEIM: Intelligent Energy Management Algorithm, achieving green radio solution
- Max distance between BBU and RRU is 20Km
- BBU-RRU interface supporting 2*10GE SFP modules

Product Model	TLU300T
Dimension (W * H * D)	356*439*142mm, 23L
Weight	23Kg
Power Consumption	Typical 300W
Antenna Channel	8T8R
Transmission Power	8*5W
Power Supply	-48V DC (-57V ~ -40V)
Frequency	1790 ~1800MHz
IBW	10MHz
OBW	10MHz
Protection Degree	IP65
Temperature	-40 °C ~ +55 °C
Moisture	5% ~ 100%

● 2100MHz 4T4R RRU — FDRU514 (2100MHz)



Application Scenarios




Dense Urban/Urban

Highlights

- ❑ LTE & NR dual mode
- ❑ Max distance between BBU and RRU is 20Km
- ❑ Max 4 level cascading
- ❑ BBU-RRU interface supporting 2*25G
- ❑ Large Coverage

Product Model	FDRU514(2100MHz)
Dimension	320mm * 470mm * 142mm
Weight	21kg
Power Consumption	Typical 495W
Antenna Channel	4T4R
Transmission Power	4*80W
Power Supply	-48V DC (-57~-40V)
Frequency	UL : 1920-1975MHz DL : 2110-2165MHz
OBW	55M
IBW	55M
Protection Degree	IP65
Temperature	-40 °C ~ +55 °C
Moisture	5% ~ 100%

● Micro cell —TDRU364(1900MHz+2000MHz+2600MHz)



Application Scenarios



Street coverage



Plaza coverage

Highlights

- ❑ RRU integrates with the antenna and Easy installation
- ❑ FAD broadband, flexible frequency configuration, easy network construction
- ❑ The beam can be adjusted flexibly according to the situation, support cell splitting, and facilitate network optimization
- ❑ The depth coverage ability is stronger
- ❑ 4 channel networking can increase the system capacity about 30%

Product Model	TDRU364(1900MHz+2000MHz+2600MHz)
Dimension (W x H x D)	170*748*170mm, 17L
Weight	18Kg
Power Consumption	Typical 216W
Transmission Power	FA:4*10W ; D:4*15W
Power Supply	220V AC (140~300V)
Frequency (F/A)	F: 1885~1915MHz; A: 2010~2025MHz
Frequency (D)	D: 2575~2635MHz
OBW/IBW (F/A)	30M(F): 1*20MHz+1*10MHz 15M(A): 1*15MHz
OBW/IBW (D)	60MHz/60MHz
Antenna	Internal
Protection Degree	IP65
Temperature	-40 °C ~ +55 °C
Moisture	5% ~ 100%

● Micro cell —TDRU364(1900MHz+2000MHz+2600MHz-P)



Highlights

- ❑ RRU integrates with the antenna and Easy installation
- ❑ FAD broadband, flexible frequency configuration, easy network construction
- ❑ The beam can be adjusted flexibly according to the situation, support cell splitting, and facilitate network optimization
- ❑ The depth coverage ability is stronger
- ❑ 4 channel networking can increase the system capacity about 30%

Product Model	TDRU364(1900MHz+2000MHz+2600MHz-P)
Dimension (W x H x D)	170*748*170mm, 17L
Weight	18Kg
Power Consumption	Typical 216W
Transmission Power	FA:4*10W ; D:4*15W
Power Supply	220V AC (140~300V)
Frequency (F/A)	F: 1885~1915MHz; A: 2010~2025MHz
Frequency (D)	D: 2575~2675MHz
OBW/IBW (F/A)	30M(F): 1*20MHz+1*10MHz 15M(A): 1*15MHz
OBW/IBW (D)	60MHz/100MHz
Antenna	Internal
Protection Degree	IP65
Temperature	-40 °C ~ +55 °C
Moisture	5% ~ 100%

● 2.3G Macro/Indoor cell— TDRU342(2300MHz)



Application Scenarios



Indoor coverage



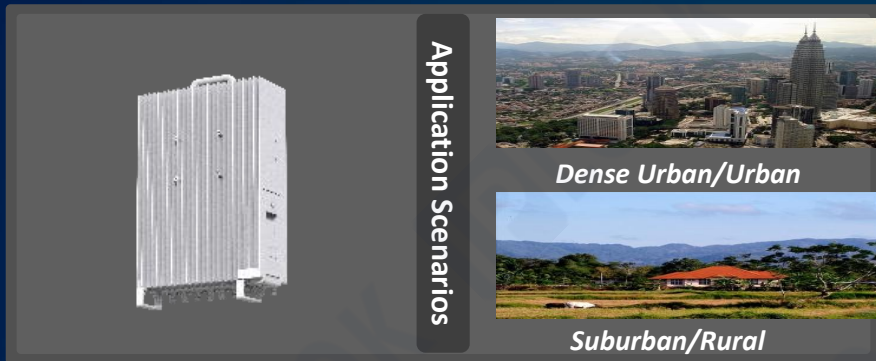
Suburban/rural coverage

Product Model	TDRU342(2300MHz)
Dimension	400*310*121mm, 15L
Weight	12Kg
Power Consumption	Typical 175W
Antenna Channel	2T2R
Transmission Power	2*50W
Power Supply	-48V DC (-57~-40V), 220V AC (140~300V)
Frequency	2320MHz~2370MHz
OBW	40M
IBW	50M
Protection Degree	IP65
Temperature	-40 °C ~ +55 °C
Moisture	5% ~ 100%

Highlights

- ❑ Zero footprint, lighter and more flexible
- ❑ High Efficiency PA Solution: CFR, DPD, Doherty etc. achieving PA Efficiency>35%
- ❑ EEIM: Intelligent Energy Management Algorithm, achieving green radio solution
- ❑ Max distance between BBU and RRU is 20Km
- ❑ Max 12 cell merge, max 4 level cascading
- ❑ BBU-RRU interface supporting 2*10GE SFP modules

● 2.3G Macro cell— TDRU518(2300MHz)



- ### Highlights
- ❑ LTE & NR dual mode
 - ❑ Max distance between BBU and RRU is 20Km
 - ❑ Max 4 level cascading
 - ❑ BBU-RRU interface supporting 2*25G
 - ❑ Large Coverage

Product Model	TDRU518(2300MHz)
Dimension	320mm * 470mm * 120mm
Weight	20kg
Power Consumption	Typical 435W
Antenna Channel	8T8R
Transmission Power	8*40W
Power Supply	-48V DC (-57~-40V)
Frequency	2300MHz~2400MHz
OBW	100M
IBW	100M
Protection Degree	IP65
Temperature	-40 °C ~ +55 °C
Moisture	5% ~ 100%

● 2.6G Macro cell — TDRU342(2600MHz)



- ### Highlights
- ❑ Zero footprint, lighter and more flexible
 - ❑ High Efficiency PA Solution: CFR, DPD, Doherty etc. achieving PA Efficiency>35%
 - ❑ EEIM: Intelligent Energy Management Algorithm, achieving green radio solution
 - ❑ Max distance between BBU and RRU is 20Km
 - ❑ Max 12 cell merge, max 4 level cascading
 - ❑ BBU-RRU interface supporting 2*10GE SFP modules

Product Model	TDRU342 (2600MHz)	TRU342 (2600MHz-H)	TDRU342 (2600MHz-L)
Dimension (W * H * D)	310mm*400mm*121mm, 15L		
Weight	15Kg		
Power Consumption	Typical 186W	Typical 150W	Typical 150W
Antenna Channel	2T2R		
Transmission Power	60W*2	40W*2	40W*2
Power Supply	-48V DC (-57~-40V), 220V AC (140~300V)		
Frequency (MHz)	2575~2635	2635~2675	2535~2575
OBW	60M	40M	40M
IBW	60M	40M	40M
Protection Degree	IP65		
Temperature	-40 °C ~ +55 °C		
Moisture	5% ~ 100%		

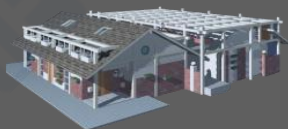
● 2.6G Micro cell — Padsite mTDRU352(2600MHz)



Application Scenarios



Dense Urban/Urban



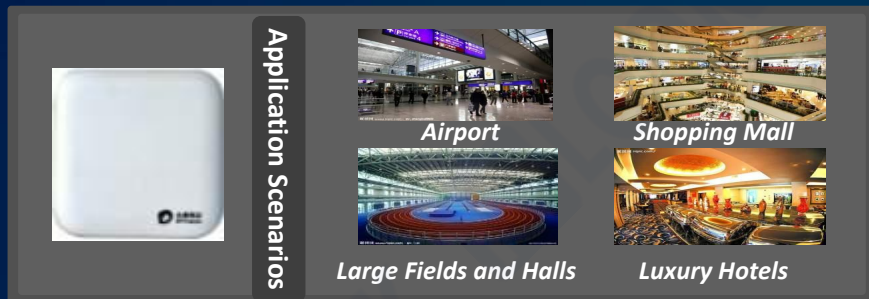
Hotspot/Blind spot

Highlights

- ❑ Ultra small-sized, ultra light weight, easy installation, flex deployment mode
- ❑ Invisible antenna
- ❑ High Efficiency PA Solution: CFR, DPD, Doherty etc. achieving PA Efficiency>35%
- ❑ EEIM: Intelligent Energy Management Algorithm, achieving green radio solution
- ❑ Max 12 cell merge, max 4 level cascading
- ❑ Max distance between BBU and RRU is 20Km
- ❑ BBU-RRU interface supporting 2*10GE SFP modules

Product Model	mTDRU352(2600MHz)	mTDRU352(2600MHz-P)
Dimension (W * H * D)	185*250*76mm, 3.5L	
Weight	3.5Kg	
Power Consumption	Typical 54W	
Antenna Channel	2T2R	
Transmission Power	2*10W	
Power Supply	220V AC (140~300V)	
Frequency (MHz)	2575-2635MHz	2575-2575MHz
OBW	40M/40M	
IBW	60M/100M	
Antenna	Internal/external antenna	
Antenna gain	10dBi(Internal)	
Protection Degree	IP65	
Temperature	-40 °C ~ +55 °C	
Moisture	5% ~ 100%	

● 900M&1.8G2.3G Indoor Cell —— Pinsite pRU352/pRU352 B08



Highlights

- ❑ Ultra small-sized, ultra light weight
- ❑ Built-in 4 antenna channel
- ❑ Support dual-Carrier/GSM/FDD, support F+T CA/256QAM, and couple GSM signals of different providers
- ❑ Wall, ceiling mounting
- ❑ Available for indoor high-capacity scenarios with high ARUP
- ❑ POE mode power supply

Product Model	pRU352	pRU352 B08
Dimension (W * H * D)	180*180*40mm, 1.2L	188*188*43mm, 1.5L
Weight	1.2Kg	1.5Kg
Power Consumption	Typical 18W	
Antenna Channel	2T2R	
Frequency	GSM/FDD: UL: 1710~1785MHz DL: 1805~1880MHz TD-LTE: 2320~2370MHz	GSM/FDD: UL: 885-915MHz DL: 930-960MHz TD-LTE: 2320~2370MHz
Transmission Power	TDL: 2*250mW FDD:2*250mW	
Bandwidth	TDL:2*20MHz FDD:2*20MHz	TDL:2*20MHz FDD:2*10MHz
Antenna	Internal / external antenna	
Protection Degree	IP31	
Power Supply	POE	
Temperature	-5 °C ~ +55 °C	
Moisture	15% ~ 85%	

PLOOK

Thank You